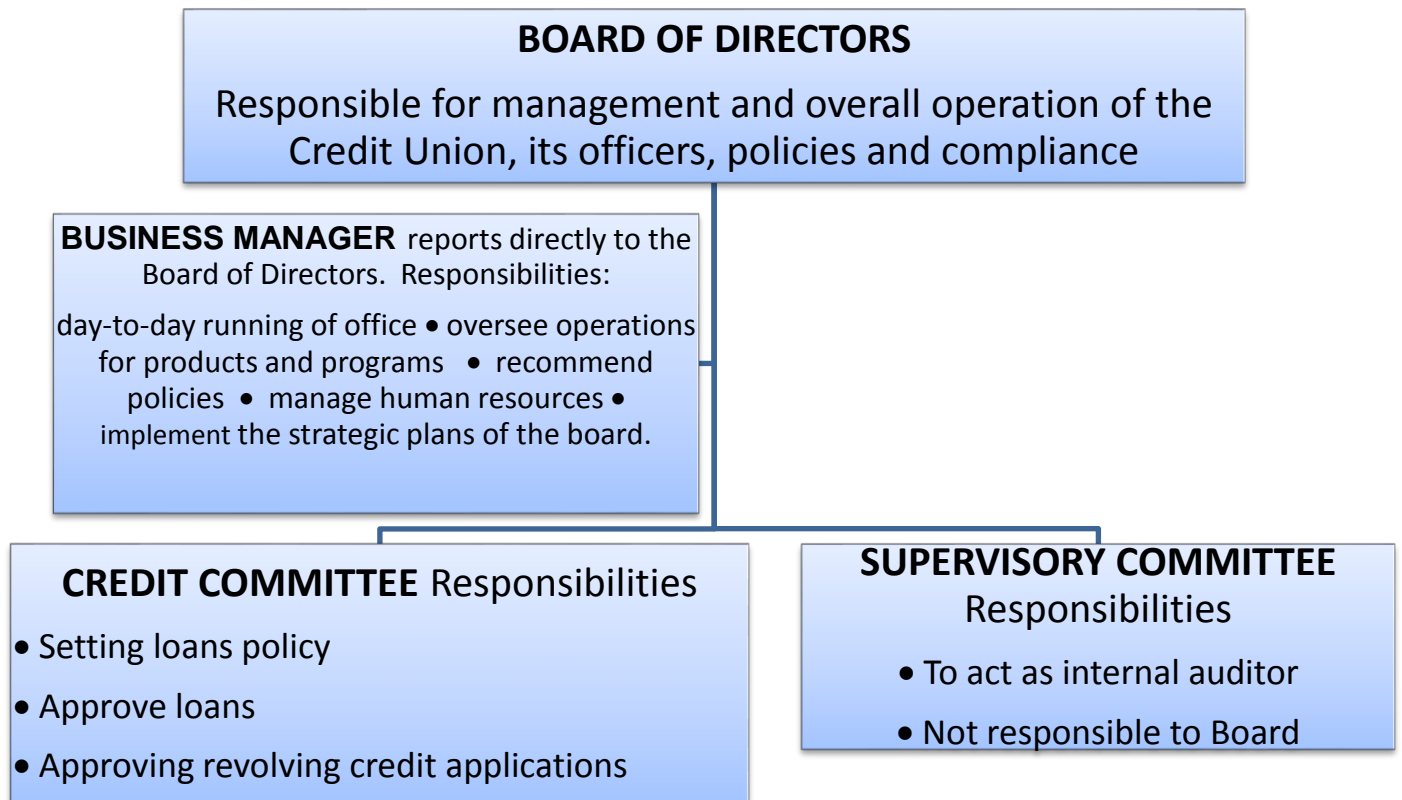


Organisational Chart

Members are elected at each Annual General Meeting



There are a number of teams within the Credit Union which perform specific roles and report to the Board of Directors. These include –

- The Treasury Team
- The Promotion and Marketing Team

Other positions provide member services and include –

- Membership Officer
- Compliance Officer
- Complaints Officer
- Share Withdrawals Officer
- Delinquency Officer

The Credit Union is run by the Business Manager and members who volunteer their time freely. If you would like to help, please speak to one of the Directors.

- Claire Tolliday, Chair
- Russell Drake, Director
- Vacant, Vice Chair
- Vacant, Director
- Jon Wray, Treasurer
- Vacant, Director
- Nika Watt, Secretary
- Karen Walker, Business Manager

